

Dry-Break Couplings



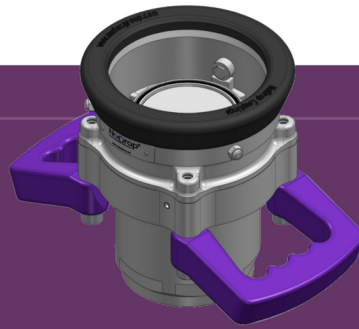
Edition 2021



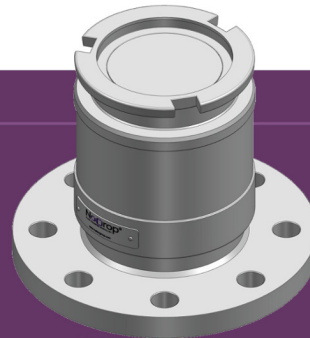
NoDrop® Dry Disconnect Coupling is essential when your media is is:

- Unsafe for the environment and workers
- Expensive
- Difficult to clean in case of leakages

Attached on the
Hoses/Loading Arm,
also known as:
Coupler or
Female Coupling



Hose Unit

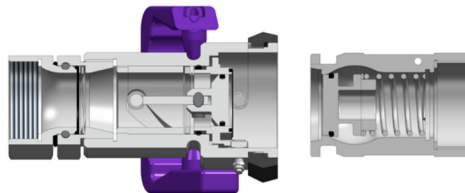


Tank Unit

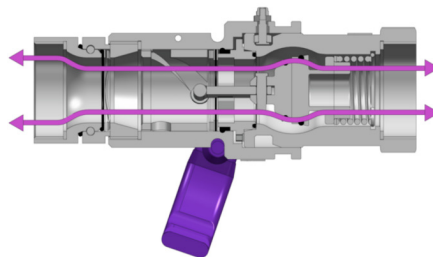
Attached on the
Manifold,
also known as:
Adaptor or
Male Coupling

HOW IT WORKS

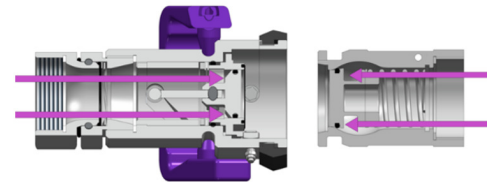
BEFORE OPERATION



DURING OPERATION



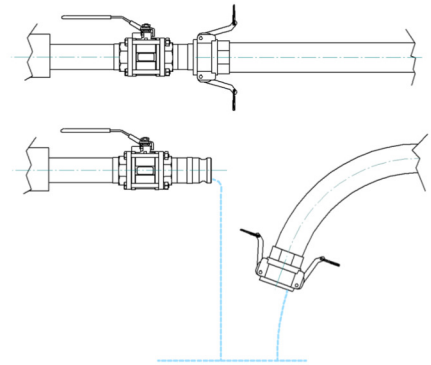
AFTER OPERATION



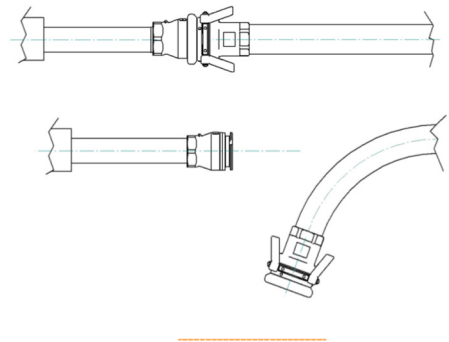
WHY USE NoDrop® DRY DISCONNECT COUPLINGS

- **Increases Safety**
DDC's have a mechanically operated valve design which eliminates the chances of spillage. This in turn increases human and environmental safety.
- **No Loss of Media**
These couplings are technologically advanced to avoid not allow the transfer fluid to leak on disconnection, resulting into loss of media. Eliminating the use of drain buckets.
- **Easy To Operate**
There is an inbuilt swivel, hence only the handles need to be rotated. The valves open and shut automatically.
- **Flow rate**
Ergonomically designed couplings for excellent flow rates.

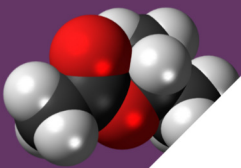
Operation without NoDrop® Coupling



Operation with NoDrop® Coupling



APPLICATION AREA



Chemical



Refinery



Truck & Rail Wagon



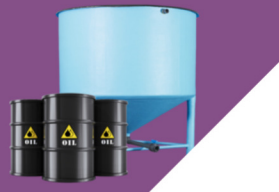
Jetty



Lube



Bunkering



Tank farm



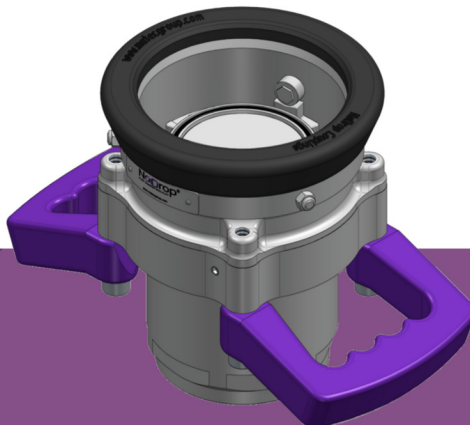
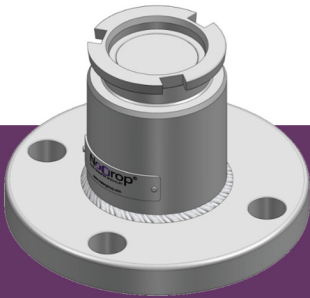
Offshore

NoDrop®

DRY DISCONNECT COUPLING

Specially designed couplings for transfer of liquids including Oil, Water, Organic & Inorganic chemicals.

- **Size Range**
1 inch to 6 inch.
- **Material of Couplings**
Stainless Steel, Aluminium, Bronze and Hastelloy (C276)
- **Seals**
FKM (Viton®), NBR (Nitrile), EPDM, Chemraz®, Kalrez®
- **End Connections**
Threaded - BSP, NPT, ISO | Flange - ANSI, ASME, ISO, DIN, TTMA
- **Working Pressure**
WP 10 Bar - WP 25 Bar
- **Safety Factor**
5:1
- **Compatibility**
NATO STANAG 3756
- **Standard**
As per EN 13480 & EN 13445



TTMA

Viton® and Kalrez® is registered trademarks of Dupont Performance Elastomers.
Chemraz® is a registered trademark of Green-Tweed

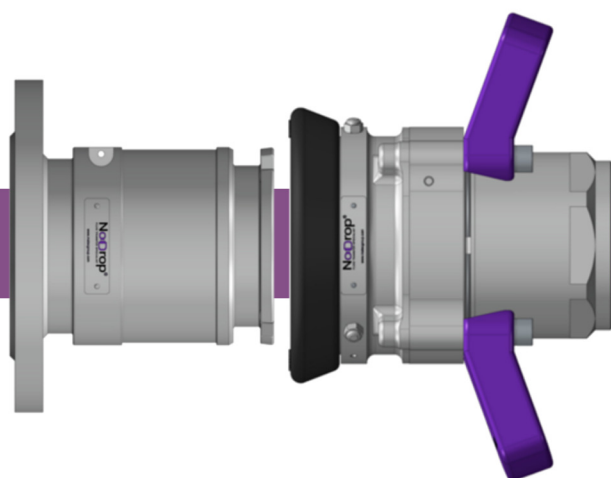
NoDrop®
FLUID TRANSFER SPECIALIST

NoDrop® "GAS"

DRY DISCONNECT GAS COUPLINGS

Specially designed couplings for handling a full range of liquefied Gases, LPG, Propane-Butane and similar, in Liquid or Vapor phase. High level of security and easy of handling and use. Perfectly interchangeable with other main manufacturers.

- **Size Range**
1 inch to 6 inch
- **Material of Couplings**
Stainless Steel
- **Seals**
FKM (Viton®)
- **End Connections**
Threaded - BSP, NPT, ISO / Flange - ANSI, ASME, ISO, DIN
- **Working Pressure**
WP 25 Bar
- **Safety Factor**
6:1
- **Standard**
As per EN 13175, EN 13480 & EN 13445



NoDrop® AdBlue®

Quick Connect Disconnect Couplings for Safe Handling of AdBlue®

The use of AdBlue® increased in recent years, thanks to the introduction anti-pollution Standards. For the transfer to be spill free we recommend the use of NoDrop-AdBlue Couplings. We do this in conjunction with the recommendations from The European Chemical Industry Council CEFIC: DIN 70070, paragraph 8.4 states "...fool proof connections must be employed so as to minimize the possibility of mistakes and contamination."

NoDrop-AdBlue Couplings ensures full proof-leak free connections and disconnection for AdBlue transfer.

We Recommend Using:

2 inch Couplings for 4,000 to 10,000 litre tanks, and 3 inch for larger tanks and also for loading and unloading of distribution tanks.

- Material: Stainless Steel 316L
- Seal: EPDM
- Working pressure: WP 25 Bar
- Test pressure: 37.5 Bar
- End connections: BSP-and NPT-threads. DIN/UNI- ASA and TTMA-flanges.
- Compatibility: NATO STANAG 3756
- Standard: As per EN 13480 & EN 13445
- **Features of NoDrop - AdBlue:**
- Quick connect disconnect
- No spillage on disconnection
- Easy to maintain
- Ergonomic design



Made in Italy

NoDrop® engineering is part of a group which has a proud 40 year legacy in the field of engineering within the fluid transfer industry. We have the expertise and commitment to manufacture the perfectly engineered Drybreak Couplings that we call NoDrop® Drybreak Coupling.



NoDrop®,
a division of

Matec® Group Srl

Via 1 Maggio 7, 20068 Peschiera Borromeo (Mi) - Italy
T. +39 02 55301788 | F. +39 02 5472158

www.mategroup.com
matec@mategroup.com