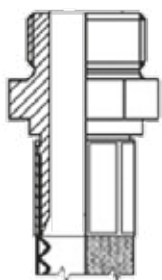


FITTINGS

RACCORDI

The standard range of end fittings, are available in Carbon Steel, Stainless Steel, Brass or Aluminium. Also available on request, in PVDF, PTFE or POLYPROPYLENE.

La gamma di raccordi standard, è normalmente disponibile in Acciaio al Carbonio, Acciaio Inox, Ottone e Alluminio. Su richiesta in PVDF, PTFE o POLIPROPILENE.

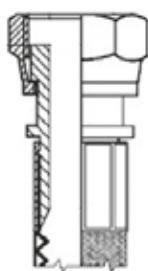


FIXED MALE THREAD

Bsp Flat Seat. Also available cone Seat, NPT, Cassoni or UNI Threaded.

FILETTO MASCHIO FISSO

Gas cilindrico sede piana. Disponibile anche Gas Conico, Sede Conica, NPT, Passo Cassoni o UNI.

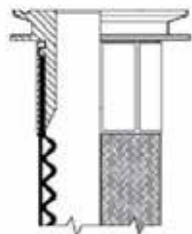


SWIVEL FEMALE

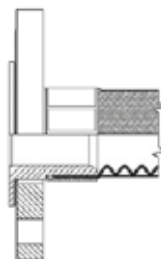
Bsp Flat Seat. Also available cone Seat, NPT, Cassoni or UNI Threaded.

FEMMINA GIREVOLE

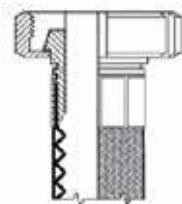
Gas cilindrico sede piana. Disponibile anche Gas Conico, Sede Conica, NPT, Passo Cassoni o UNI.



TRI-CLAMP COUPLING RACCORDO TRI-CLAMP

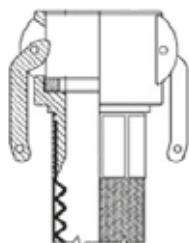


FIXED AND SWIVEL FLANGES UNI/DIN OR ASA FLANGIA FISSA O GIREVOLE UNI/DIN OR ASA



HYGIENIC FITTINGS

DIN, IDF, SMS, ENO-GAROLLA
ALIMENTARE-FARMACEUTICO
DIN, IDF, SMS, ENO-GAROLLA



CAMLOCK COUPLERS AND ADAPTERS RAPIDI CAMLOCK

Adapters are available from stock for:

- QUICK TANK TRUCK ITALIAN COUPLINGS (type R)
- QUICK TANK TRUCK FOREIGN COUPLINGS (type Din, Storz, Guillemin)

Diversi adattatori sono disponibili a stock per:

- RAPIDO CISTERNA ITALIANO (tipo R)
- RAPIDO CISTERNA STRANIERO (tipo Din, Storz, Guillemin)

