

RACCORDI FITTINGS

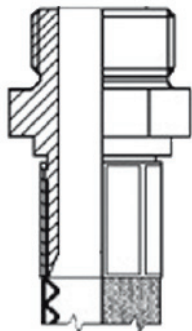
RACCORDI STANDARD PER TUBI IN PTFE

La gamma di raccordi standard, è normalmente disponibile in Acciaio al Carbonio, Acciaio Inox, Ottone e Alluminio.

Su richiesta in PVDF, PTFE o POLIPROPILENE.

STANDARD FITTINGS FOR PTFE HOSES

The standard range of end fittings, are available in Carbon Steel, Stainless Steel, Brass or Aluminium. Also availbla on request, in PVDF, PTFE or POLYPROPYLENE.

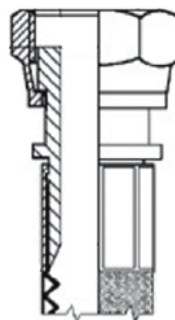


FILETTO MASCHIO FISSO

Gas cilindrico sede piana. Disponibile anche Gas Conico, Sede Conica, NPT, Passo Cassoni o UNI.

FIXED MALE THREAD

Bsp Flat Seat. Also available cone Seat, NPT, Cassoni or UNI Threaded.

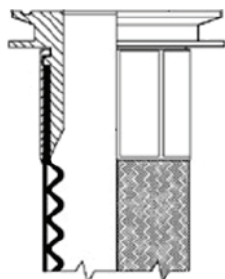


FEMMINA GIREVOLE

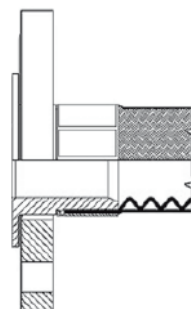
Gas cilindrico sede piana. Disponibile anche Gas Conico, Sede Conica, NPT, Passo Cassoni o UNI.

SWIVEL FEMALE

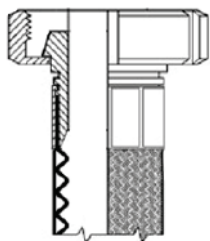
Bsp Flat Seat. Also available cone Seat, NPT, Cassoni or UNI Threaded.



RACCORDO TRI-CLAMP TRI-CLAMP COUPLING



FLANGIA FISSA O GIREVOLE UNI/DIN OR ASA FIXED AND SWIVEL FLANGES UNI/DIN OR ASA

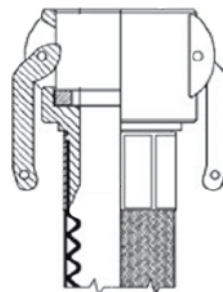


ALIMENTARE-FARMACEUTICO

DIN, IDF, SMS, ENO-GAROLLA

HYGENIC FITTINGS

DIN, IDF, SMS, ENO-GAROLLA



RAPIDI CAMLOCK

CAMLOCK COUPLERS AND ADAPTERS

Diversi adattatori sono disponibili a stock per:

- RAPIDO CISTERNA ITALIANO (tipo R)
- RAPIDO CISTERNA STRANIERO (tipo Din, Storz, Guillemin)

Adapters are available from stock for:

- QUICK TANK TRUCK ITALIAN COUPLINGS (type R)
- QUICK TANK TRUCK FOREIGN COUPLINGS (type Din, Storz, Guillemin)